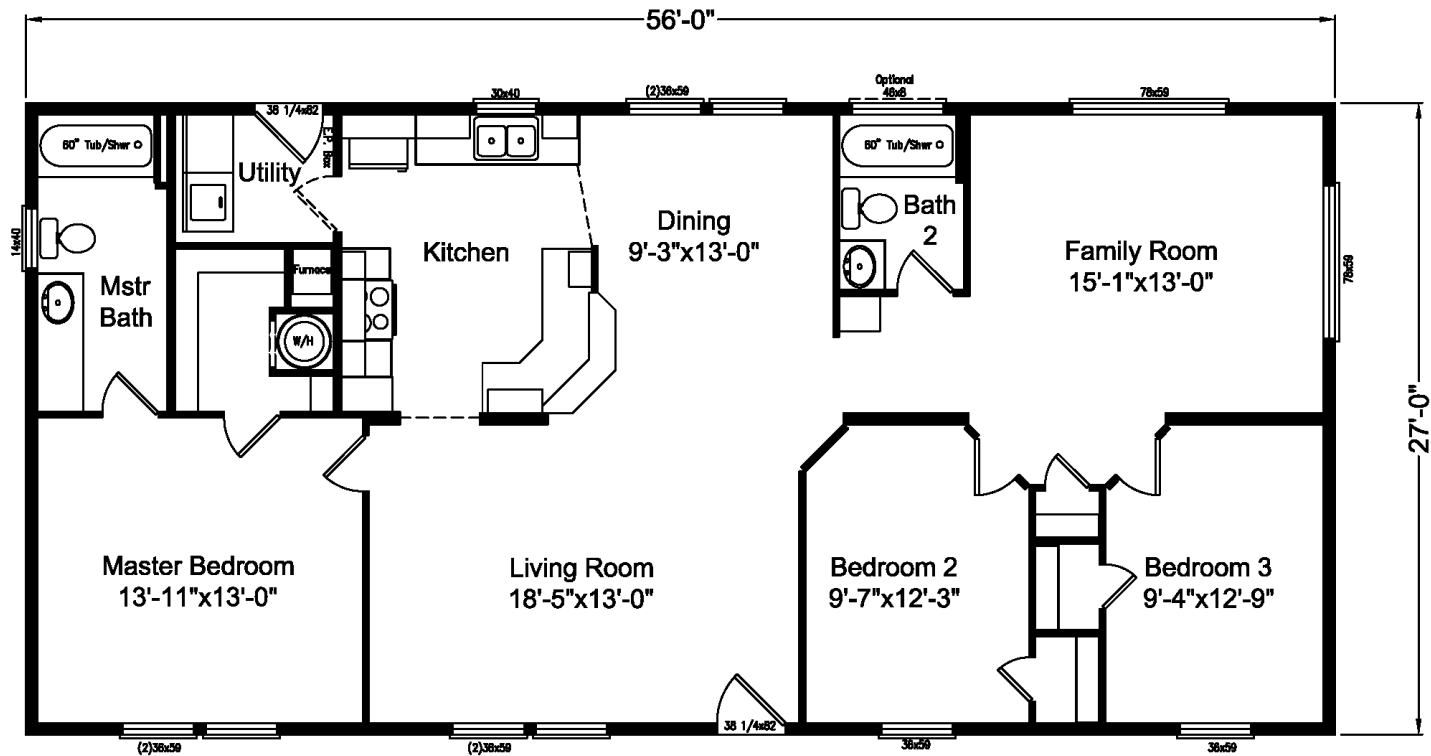




www.palmharbor.com



Klamath



Klamath

Model N4P56S49

4G28563A

Approx. 1512 Sq. Ft.

- 3 bedrooms, 2 baths
- Two living areas
- Master bedroom with spacious walk-in closet
- Spacious kitchen with

breakfast bar

Copyright © Palm Harbor Homes, Inc. Because Palm Harbor Homes has a continuous product updating and improvement process, prices, plans, dimensions, features, materials, specifications and availability are subject to change without notice or obligation. Please refer to working drawings for actual dimensions. Renderings and floor plans are artist's depictions only and may vary from the completed home. Square footage calculations and room dimensions are approximate subject to industry standards.