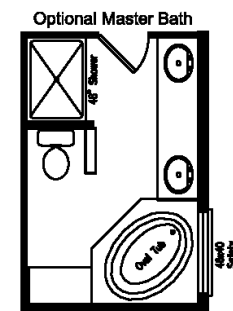
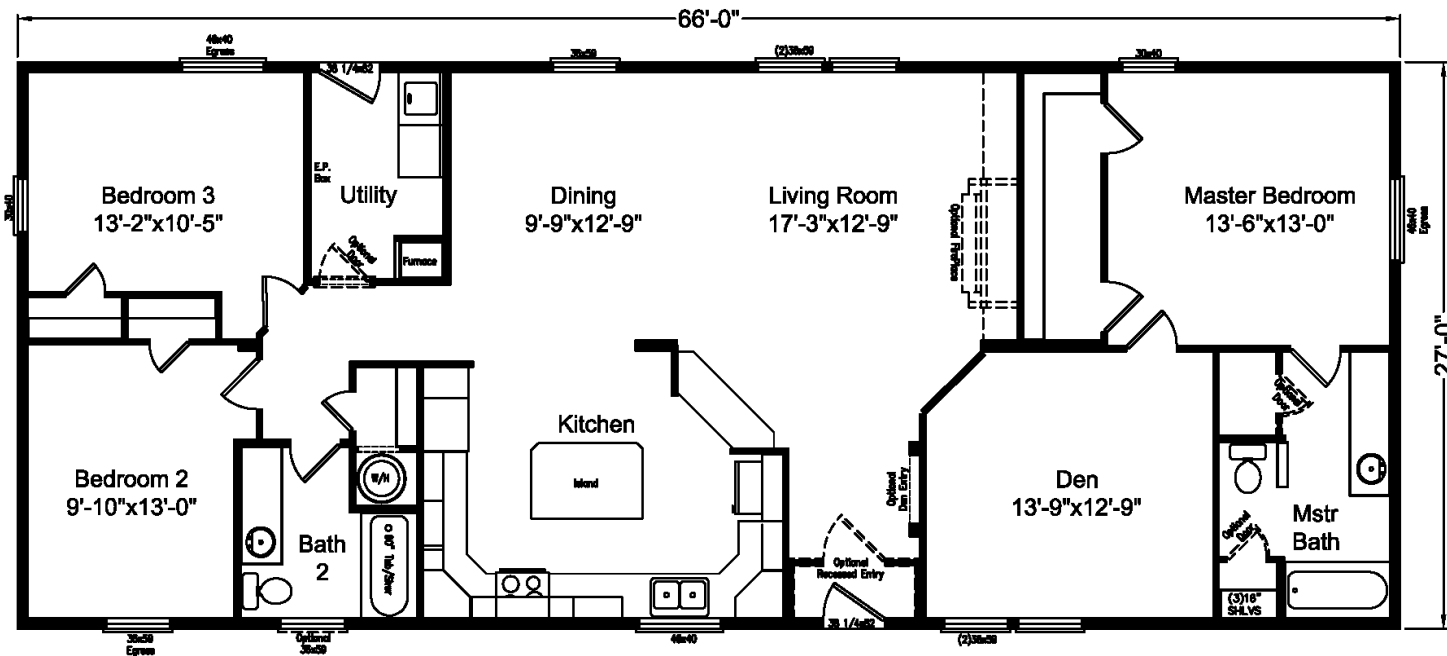




www.palmharbor.com



# Truman III



**Truman III**  
**Model N4P366A1**  
 4G28663A  
**Approx. 1782 Sq. Ft.**

- 3 bedrooms, 2 baths
- Gourmet kitchen with tons of storage and pass-through to living room
- Spacious den retreat
- Huge double walk-in closet in door master bedroom
- Alternate front utility for garage access

Copyright © Palm Harbor Homes, Inc. Because Palm Harbor Homes has a continuous product updating and improvement process, prices, plans, dimensions, features, materials, specifications and availability are subject to change without notice or obligation. Please refer to working drawings for actual dimensions. Renderings and floor plans are artist's depictions only and may vary from the completed home. Square footage calculations and room dimensions are approximate subject to industry standards.