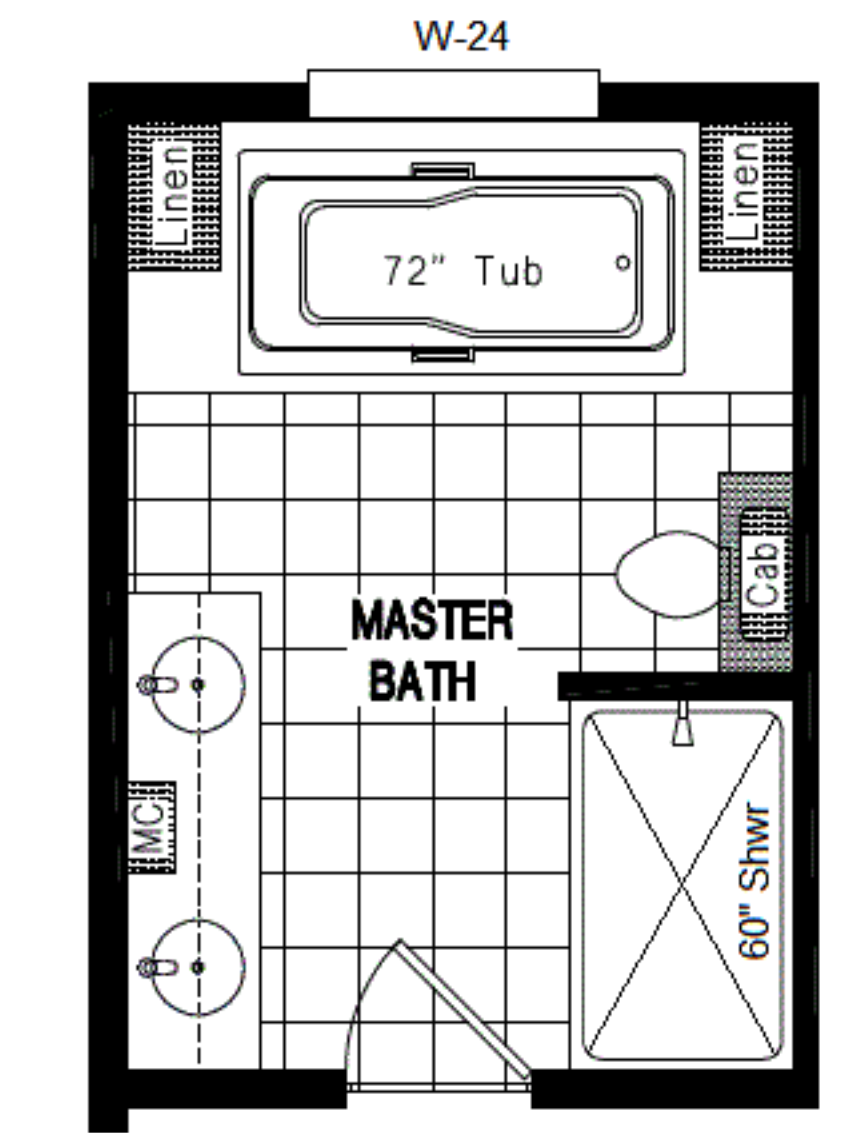
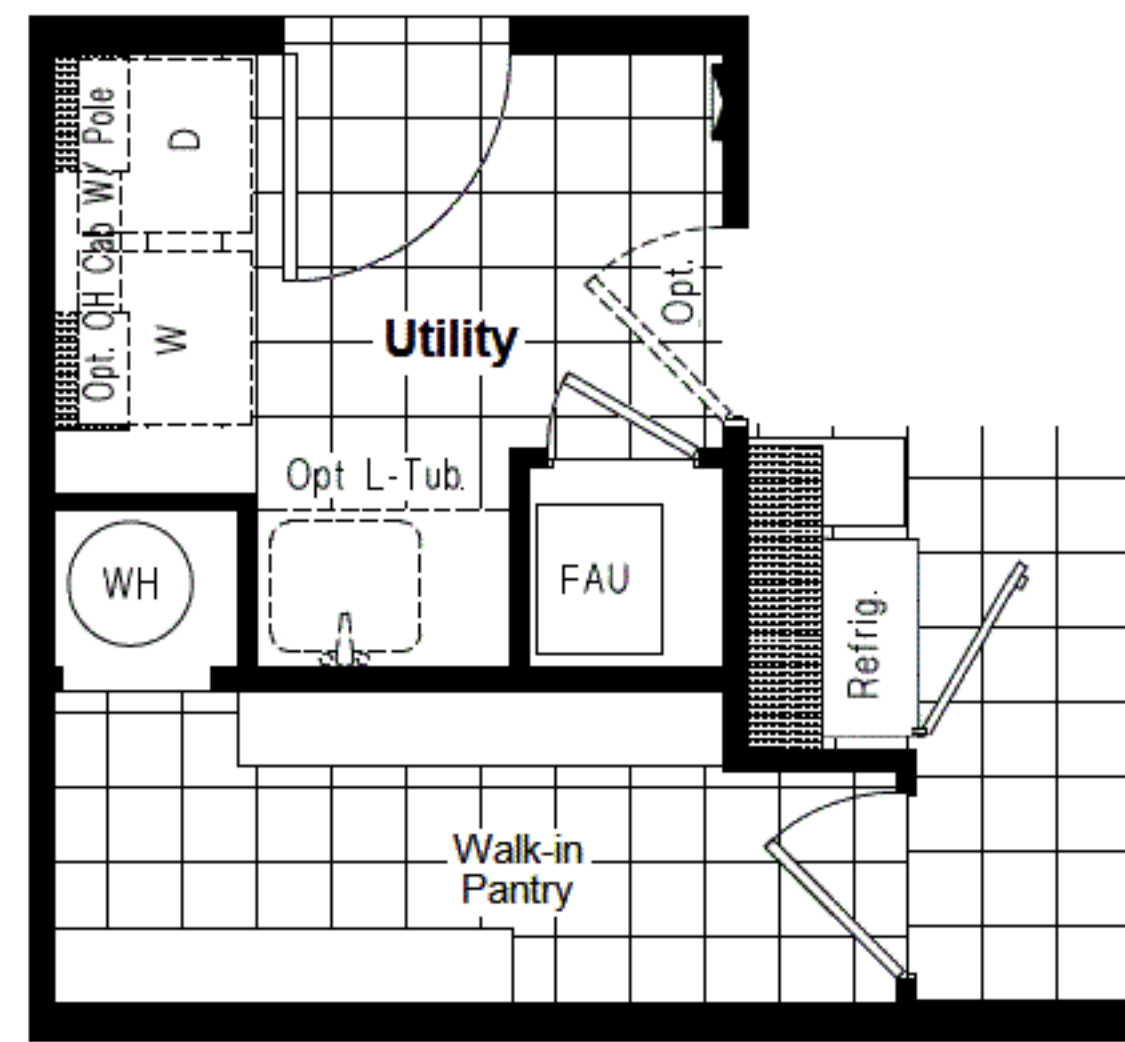


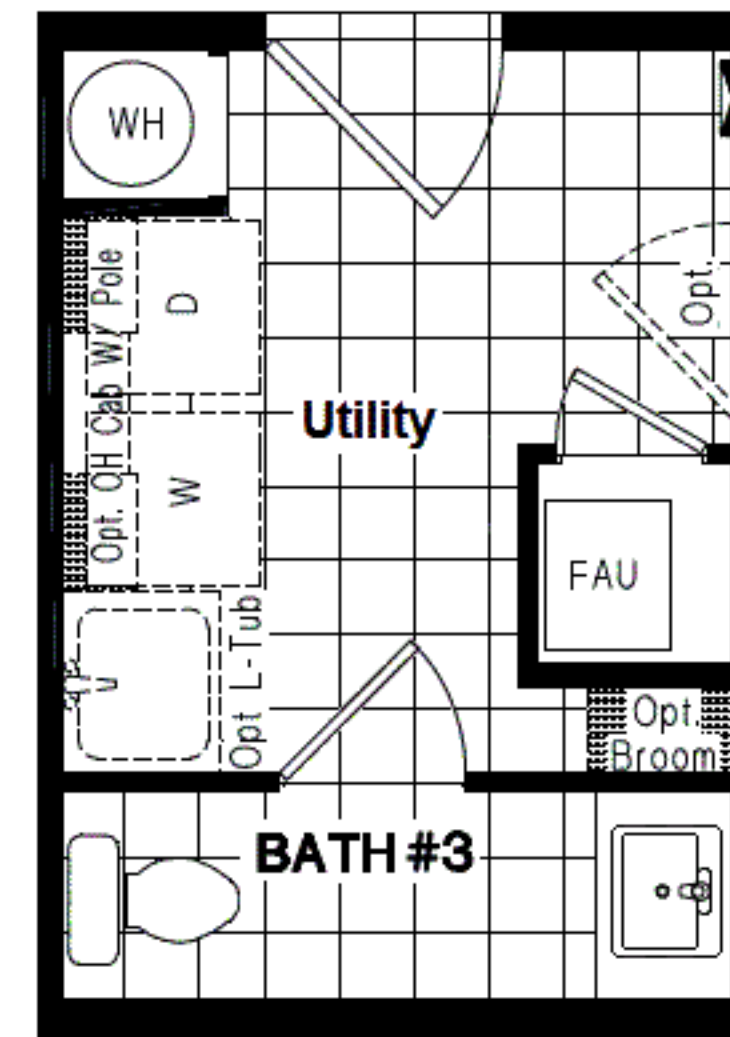
27 WIDE



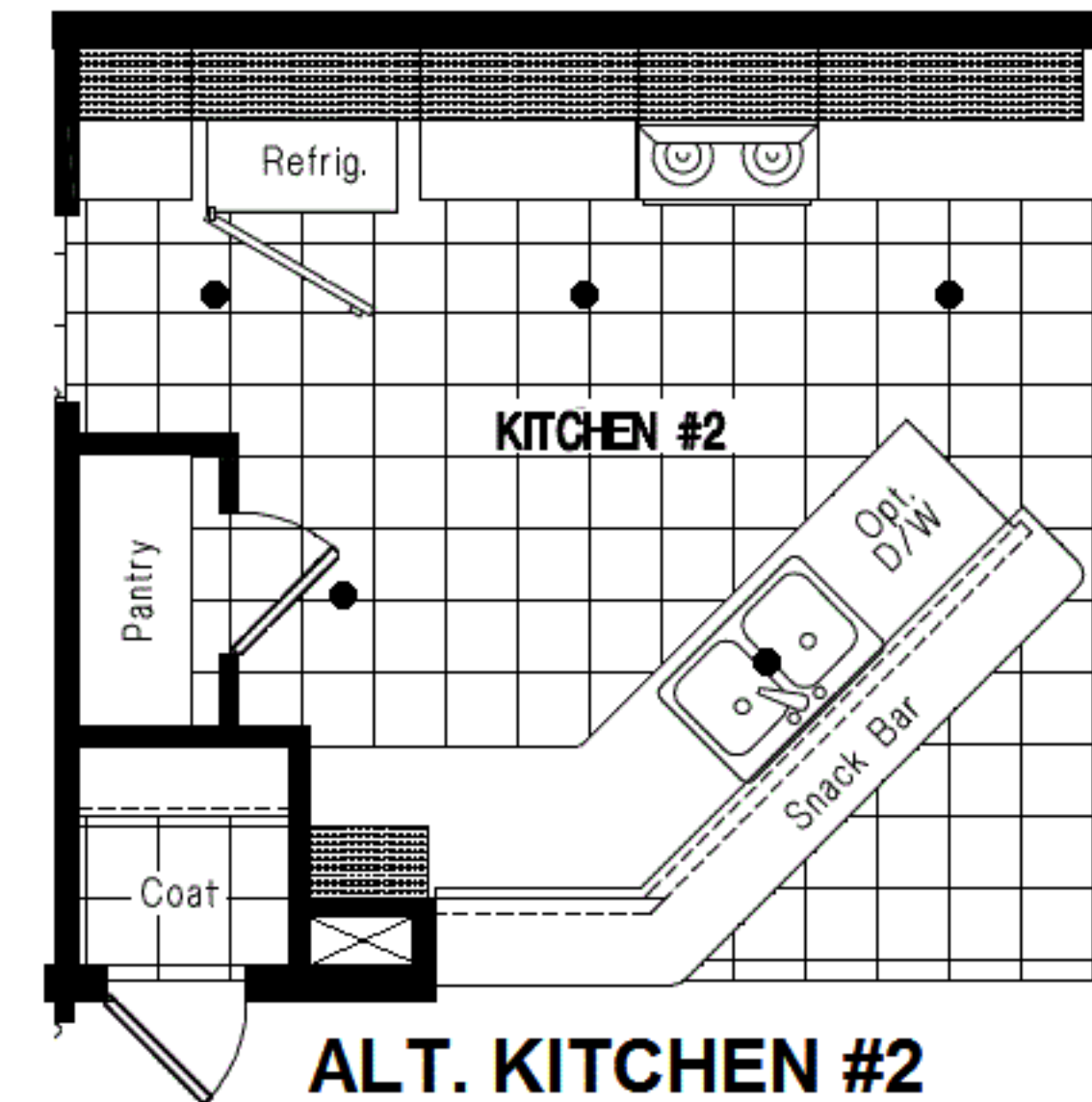
OPT. GLAMOUR BATH



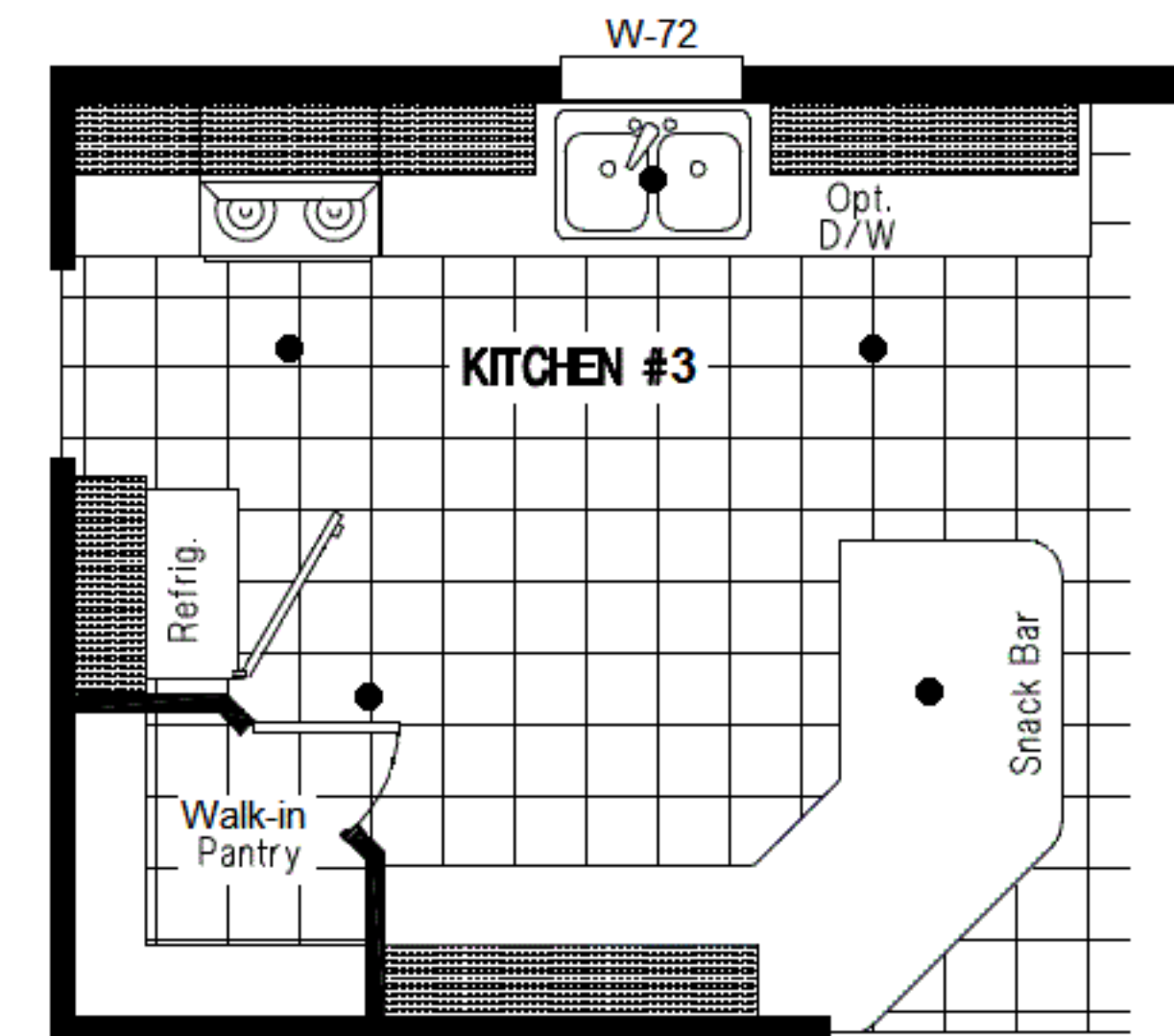
OPT. WALK-IN PANTRY
(Only Available w/Standard Kitchen)



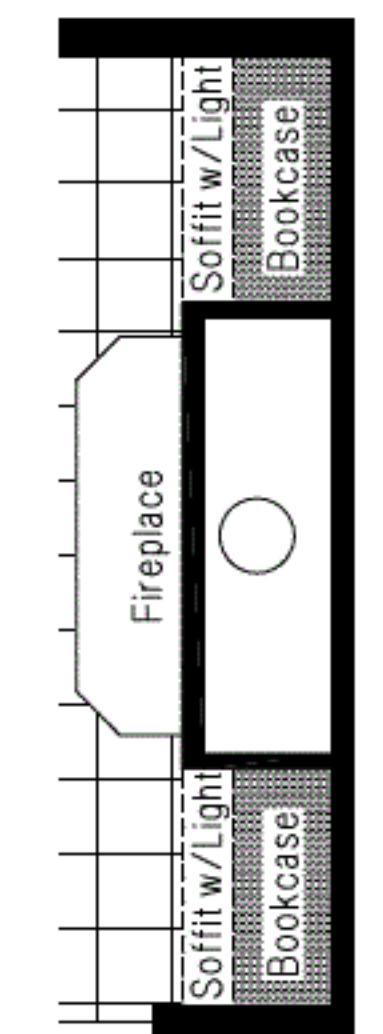
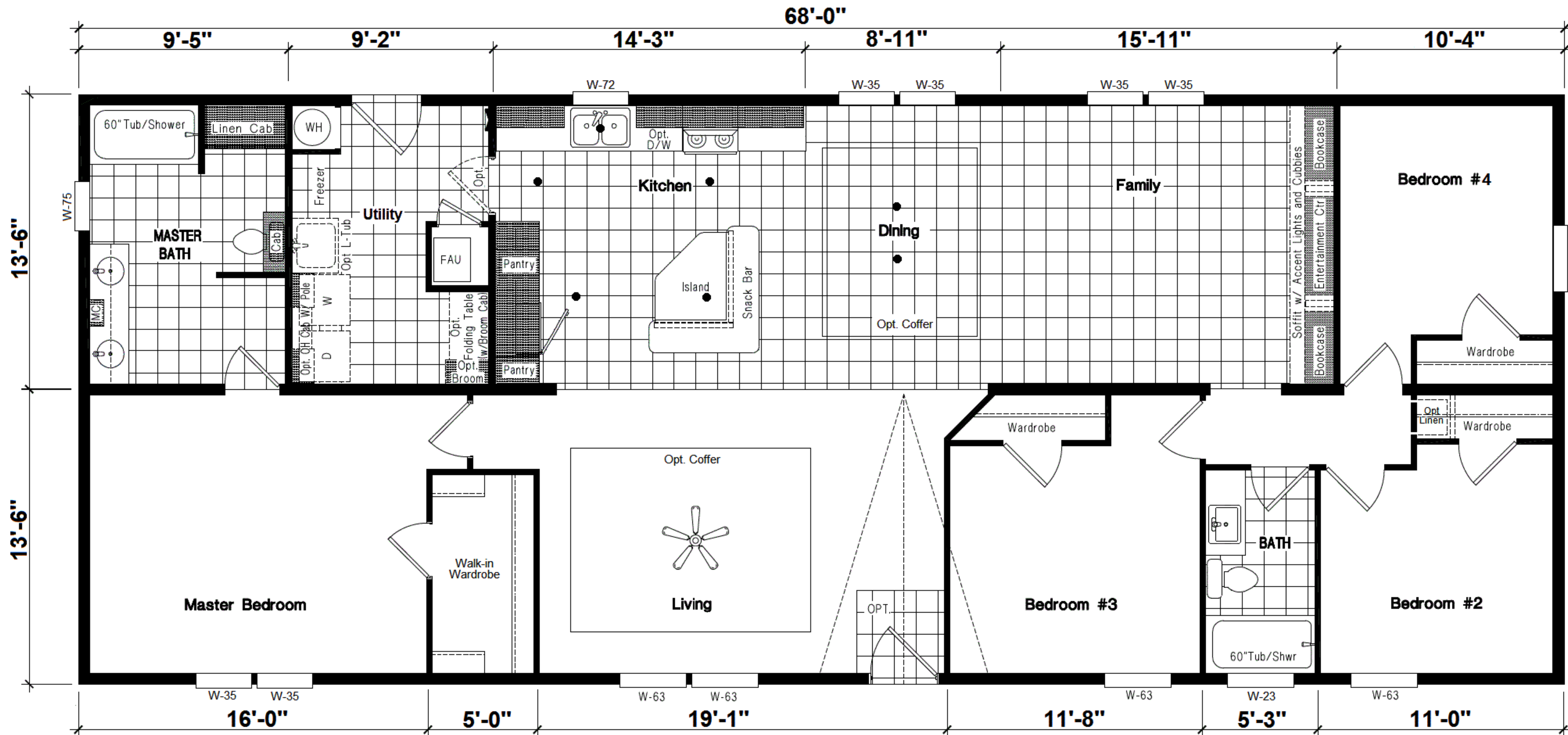
OPT. HALF BATH



ALT. KITCHEN #2



ALT. KITCHEN #3



OPT. FIREPLACE

INSPIRATION *GOLD*
The MAPLE 27x68 ING 682F

FOUR BEDROOM, TWO BATH - 1,836 SQ. FT.