



# Fleetwood Homes of Idaho

Option Photo Book



Revised 2.13.2017

# Table of Contents

Categories are hyperlinked! Click on the category to jump to the contents.

[Packages](#)

[Kitchen](#)

[Structural](#)

[Utility Room](#)

[Thermal](#)

[Interior](#)

[Plumbing](#)

[Exterior](#)

[Electrical](#)

[Doors & Windows](#)

[Flooring](#)

[Bathrooms](#)

[Cabinetry](#)

[Miscellaneous](#)

# Packages –

## Upgrade Appliance Package (Gas or Electric)

22 CU FT SXS REFER  
W/WATER AND  
ICE MAKER IN  
DOOR



(Includes plumbing  
for water and  
icemaker)

SELF CLEANING  
OVEN WITH  
SMOOTH TOP OR  
GAS RANGE



Gas



Smooth Top

UPGRADE  
DISHWASHER

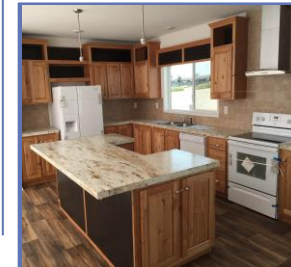


Pot and Pan  
Scrubber / Energy  
Star Certified

BLACK OR WHITE  
APPLIANCES



Black



White

### Whirlpool Appliance Packages

\*\* Black Whirlpool  
appliances  
standard in all  
homes \*\*

[Return to Table of Contents](#)

# Packages –

## Upgrade Appliance Package 2 (Gas or Electric)



Microwave Range  
Hood



Washer & Dryer  
(electric)

Same as Upgrade appliance package with the addition of the microwave range hood and a washer/electric dryer combo

- 22 CU FT SXS REFER W/WATER AND ICE MAKER IN DOOR  
*(Includes plumbing for water and icemaker)*
- SELF CLEANING OVEN WITH SMOOTH TOP OR GAS RANGE
- UPGRADE DISHWASHER
- **MICROWAVE RANGE HOOD**
- **WASHER AND DRYER (electric)**
- BLACK OR WHITE APPLIANCES



# Packages –

## Upgrade Stainless Steel Appliance Package (Gas or Electric)



### **\*\* Whirlpool brand appliances \*\***

- STAINLESS STEEL 26.4 CU. FT SXS REFER WITH WATER AND ICEMAKER IN DOOR
- STAINLESS STEEL GAS OR ELECTRIC RANGE
- STAINLESS STEEL DISHWASHER
- STAINLESS STEEL MICROWAVE RANGE HOOD

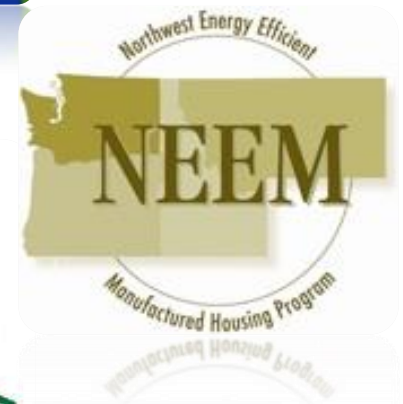
[Return to Table of Contents](#)



# Packages –

## Energy Star Certification Package (Electric or Gas)

- ELECTRIC OR GAS FURNACE
- 50 GALLON GAS OR ELECTRIC WATER HEATER
- STEEL IN-SWING FRONT DOOR
- STEEL IN-SWING REAR DOOR
- R-40 ROOF INSULATION
- R-21 WALL INSULATION W/ 2" X 6" SIDEWALLS
- R-33 FLOOR INSULATION
- E-STAR PROGRAMMABLE THERMOSTAT
- VINYL WINDOWS T/O
- 25 WATT WHOLE HOUSE FAN
- R-8 INSULATED FLEX DUCT (WHEN APPLICABLE)
- 2 EACH 12" GALVANIZED ELBOWS (WHEN APPLICABLE)
- 1 BOX OF 6 MIL BLACK POLY
- (IF DISHWASHER CHOSEN, MUST BE UPGRADED)



[Return to Table of Contents](#)

# Packages – Single Lever Faucets T/O



Kitchen w/Pullout  
Sprayer



Tub/Shower  
Diverter



Bathroom Lavys

# Packages – General Packages

## Pre-charged Air Conditioning Systems – 410 A – 14 SEER

**Ship Loose \***

**Line Installed / Ship  
Loose Condenser**

**Full Install \*\***

- 2 ½ - 4 TON ACCUCHARGE CONDENSER
- COIL - VEXAR - QC R410A A/C H/P
- LINESET - QC - R410A 3/8 X 7/8 30'
- DOWNFLOW COIL SHELF EB\*\*D
- DISCONNECT
- POWER WHIP
- BASE

\* Must add A/C Ready and A/C Disconnect options

\*\* Not available on 76' length, foundation ready, or IRC modular homes

INDOOR COMFORT PRODUCTS  
**Revolv**  
BY STYLECREST

The Mobile Home Revolution Continues!

**Revolv® Split System AccuCharge® A/C**

**14 SEER**



Composite Base Pan: Absorbs sound and is corrosion resistant. Composite is also stronger and lighter than steel.

Micro-Channel Coils: All aluminum coils in all models provides high corrosion resistance.

High Pressure Switch: Protects against abnormally high system pressures. Auto-reset feature prevents nuisance service visits.

Louvered Condenser Guard: Durable metal guard protects the coil from yard hazards and extreme weather.

Designed Using Galvanized Steel: With a polyester urethane coat finish. The 950 hour salt spray finish resists corrosion 50% better than comparable units.

AccuCharge® with FitRight® Fittings: Correctly charged for fast easy installations.

**Warranty**  
5 Years Parts / 1 Year Labor \*  
\* To receive 10-year Parts Limited Warranty, online registration of unit must be completed within 60 days of installation. Visit [www.stylecrest.com](http://www.stylecrest.com) for warranty registration.

**Split System**  
1 Year Labor  
5 Years Parts

**Revolv**  
BY STYLECREST

**Revolv**  
The Mobile Home Expert



[Return to Table of Contents](#)



# Packages – General Package, Cont.

## Power Saver Package

- 2" X 6" EXTERIOR  
SIDEWALLS WITH R-19  
WALL INSULATION
- R-38 ROOF INSULATION
- 32" 9-LIGHT STEEL IN-  
SWING REAR DOOR



[Return to Table of Contents](#)



## Waverly Crest Package

### **Polar Package**

- R38 CEILING INSULATION
- R33 FLOOR INSULATION

[Return to Table of Contents](#)



## Barrington Package

### Kitchen Package

- OVERHEAD CABINET LIGHTS IN KITCHEN ONLY
- UPGRADE FX FORMICA COUNTERTOP & FORMICA BULLNOSE EDGE - ISLAND ONLY
- BLACK FARMER'S APRON SINK WITH SOAP DISPENSER
- SINGLE LEVER PULLOUT SPRAYER FAUCET
- BASE CAB PULL OUT TRASH CAN

[Return to Table of Contents](#)



## Broadmore Packages

### Rocky Mountain Package

(28563B and 28683B models only)

- ENTERTAINMENT CENTER W/STACKED ROCK ACCENT
- COFFEE CHERRY L/R BEAMS
- UPGRADE ISLAND W/COLUMNS
- STACKED ROCK ON FRONT OF ISLAND
- LED CAN LIGHTS IN KITCHEN
- PENDANT LIGHTS IN KITCHEN OVER ISLAND
- GLAMOUR BATH
  - DECKMOUNT DROP IN OVAL TUB
  - 48" 1 PC. SHOWER
  - DUAL SINKS
  - LINEN CABINET OR SHELVES (PER PLAN)
  - 40" X 53" WINDOW ABOVE TUB
- COSMETIC LIGHT BAR OVER SINKS
- 10' DORMER WITH PAINTED ACCENT
- AIR STONE ROCK COLUMNS IN DORMER ACCENT
- PLANT MADE BROADMORE SHUTTERS ON FDS AND HITCH END ONLY

[Return to Table of Contents](#)





## Broadmore Packages, Cont.

### Choice Package

- VINYL ENTRY
- UPGRADED CEILING CROWN MOLDING IN L/R, F/R, D/R, AND KITCHEN  
(VOG only)
- 4" FORMICA BACKSPLASH IN KITCHEN AND BOTH BATHS
- BEADBOARD WINDOW SURROUNDS IN L/R AND F/R  
(doublewides only)
- VALANCE BOXES IN L/R, F/R, D/R AND KITCHEN
- CROWN MOLDING ON KITCHEN OVERHEAD CABINETS

[Return to Table of Contents](#)



## Broadmore Packages, Cont.

### Signature Package

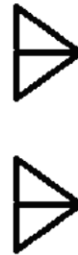
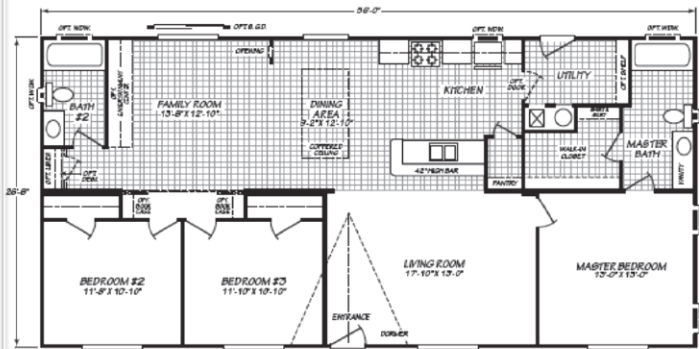
(14663B model only)

- VINYL ENTRY
- VALANCE BOXES-L/R, F/R, D/R, KITCHEN, AND M/BED WINDOWS
- 4" FORMICA BACKSPLASH IN KITCHEN AND BOTH BATHS
- CAN LIGHTS IN KITCHEN
- SHADOW BOX ABOVE KITCHEN OVERHEAD CABINETS W/ COFFEE CHERRY BEADBOARD
- LOWER CUBBIES IN MASTER BATH CABINET
- 2-SCONCE LIGHTS MASTER BATH NEXT TO MIRROR
- WIRE/BRACE FOR CEILING FAN IN M/BEDROOM
- UPGRADE CEILING CROWN MOLDING TREATMENTS IN L/R
- USB PORT IN KITCHEN

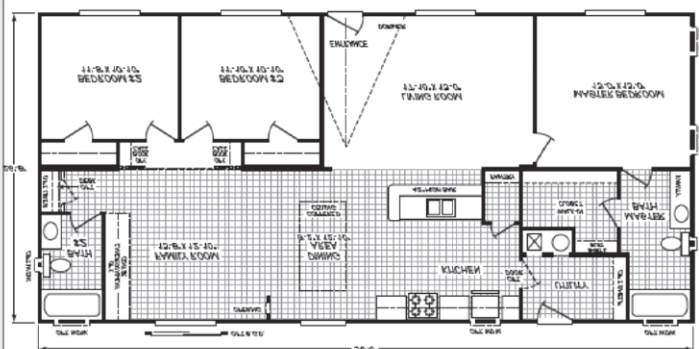
[Return to Table of Contents](#)

# Structural – Floorplan Orientations

Standard

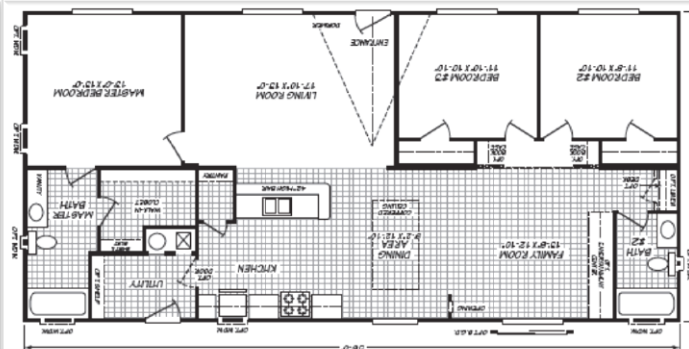


Flip End-to-End



Mirror Image

**Hitch-End is Always on the Right**



Flip End-to-End  
and Mirror Image

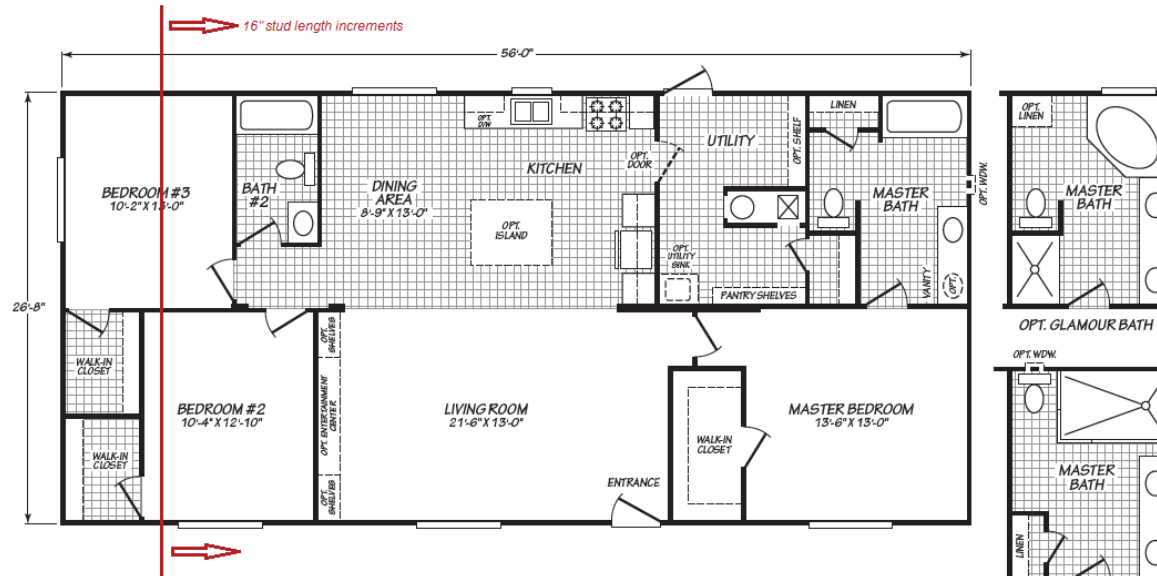
[Return to Table of Contents](#)

# Structural- Stretches in 16" Increments



BROADMORE

www.fleetwoodhomes.com



## MODEL 28563B

3 Bedroom • 2 Bath • 1,492 Square Feet

©2016 FLEETWOOD HOMES INC. ALL RIGHTS RESERVED

Important: Because we continually update and modify our products, it is important for you to know that our brochures and literature are for illustrative purposes only. ILLUSTRATIONS MAY SHOW OPTIONAL FEATURES. All information contained herein may vary from the actual home we build. Dimensions are nominal length and width measurements are from exterior wall to exterior wall. We reserve the right to make changes at any time, without notice or obligation, in prices, colors, materials, specifications, features and models. Please check with your retailer for specific information about the home you select.



- Available in 16" increments only and can go up to 76' in total length

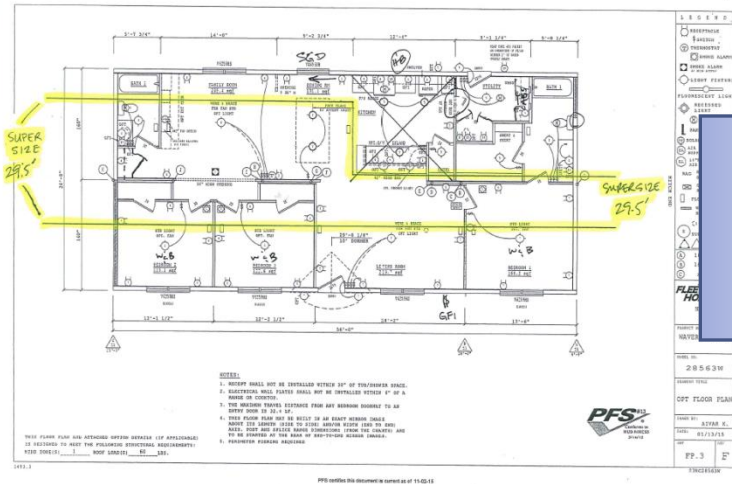
\*\* Always requires an Engineering Charge

[Return to Table of Contents](#)

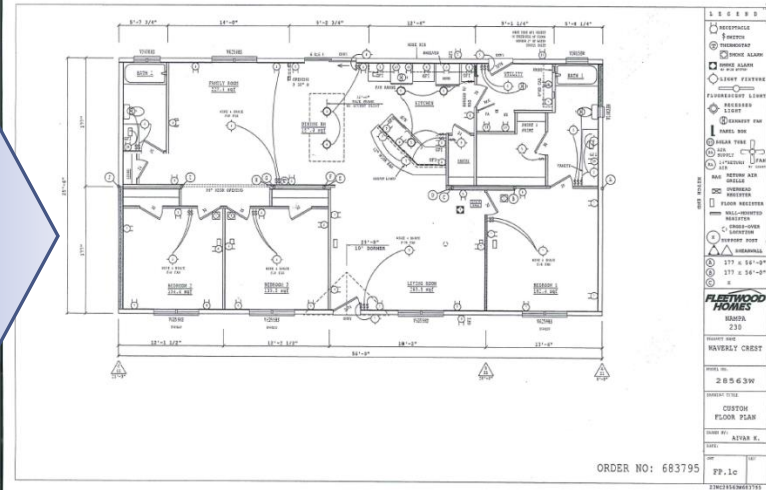


# Structural – Supersize floor plans

- Rendering



- Engineered



- \*\* Widen (Supersize) 13' 4" floor to 15'
- \*\* Cost is Figured Per Linear Foot
- \*\* Requires Engineering Charge

[Return to Table of Contents](#)

# Structural – Optional Closets



Guest Closet

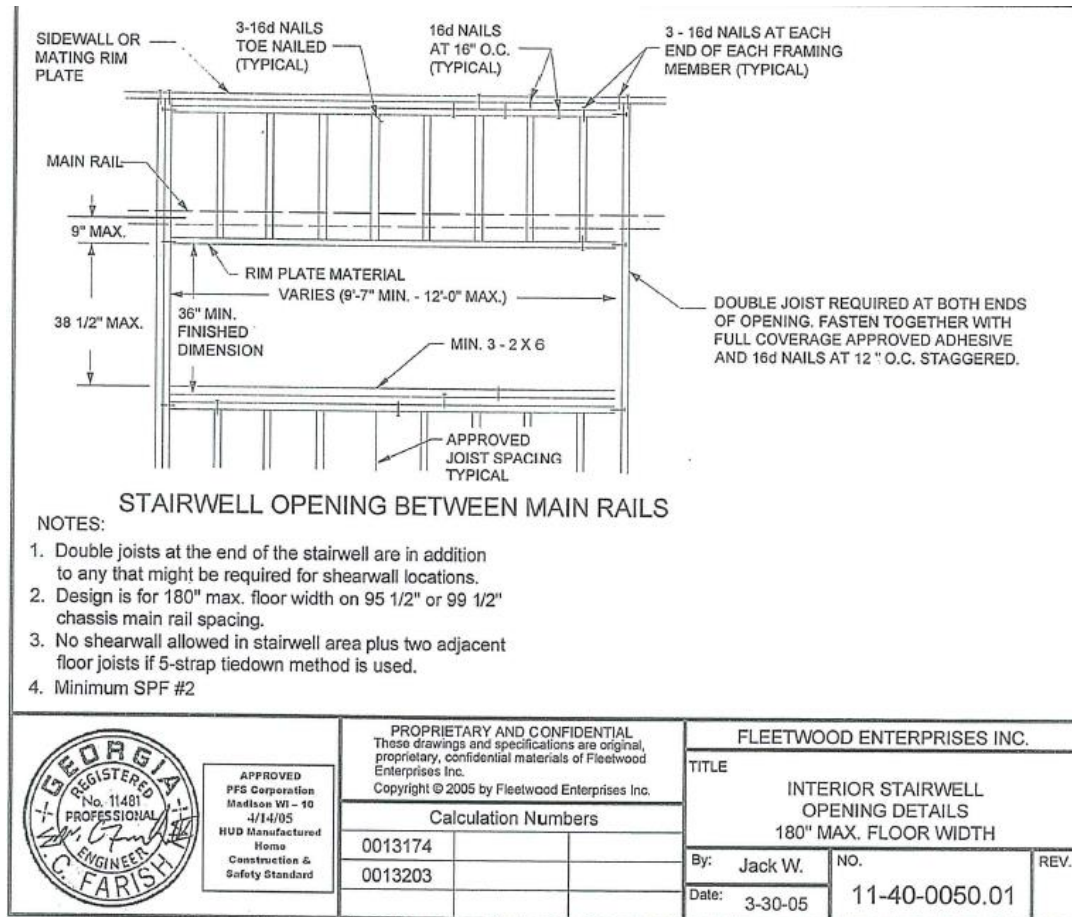


Linen Closet

\*\* Wire or wood shelving, depending series standard or upgrade option. Wood pictured.

[Return to Table of Contents](#)

# Structural – Entry - Basement



\*\* Must be between I-Beams (on marriage line) on HUD house

[Return to Table of Contents](#)

# Thermal – General Info

## Insulation Thickness with R-Values:

Ceilings	Walls	Floors
R21 = 6 ½"	R11 = 3 ½"	R11 = 3 ½"
R28 = 8 ½"	R12 = 3 ½"	R14 = 4"
R33 = 9 ¼"	R19 = 5 ½"	R22 = 6 ½"
R38 = 11 ¼"	R21 = 5 ½"	R33 = 8 7/8"
R40 = 12"		



# Plumbing – Water Shut-Off Valves Throughout



Sinks

[Return to Table of Contents](#)

# Electrical – Panel Options

- A/C Ready
  - Adds conduit into main panel
  - Adds additional breaker into main panel
  - Adds A/C thermostat wiring

- A/C Disconnect



[Return to Table of Contents](#)

# Electrical – Panel Options, Cont.



Meter Base

# Electrical – Lighting



Ceiling Fan  
w/Light Installed



Pendant  
Lighting



Exterior Flood  
Lighting



# Electrical – Lighting, cont.



30 + Years Life

80% Less Power

96% Less Heat



# Electrical – Lighting – Cabinets



In-Cabinet Lighting  
(In **Barrington** Series Only)



Under-Cabinet  
Lighting



# Electrical – Receptacles



Exterior GFI (*Ground Fault Interrupted*) Receptacle



USB Charging Recept

# Electrical – Receptacles, Cont.



TV/Phone Raceway



Hide-A-Power Station

# Flooring – Shaw Carpet

- Livewire – 11 oz. - Standard in Broadmore, Dakota and Rivercrest
- Mantra – 15 oz. - Standard in Waverly Crest, Timberwood and Barrington, upgrade in other series
- Macrame/Believe It – 25 oz. - FHA Grade - Standard in Riverknoll, upgrade in other series
- Go Softly – 34 oz. - FHA Grade+ - Upgrade for all series

\* Cut charge applies for different grade or color carpet in different rooms within home

\*\* Installed carpet only available in Waverly Crest series and singlewides

[Return to Table of Contents](#)



# Flooring – Shaw Vinyl Rolled Goods

- Resilient Vinyl
  - Aged Barrel
  - Bedford
  - Belville
  - Highland
  - Ridge
  - Stonewashed

\*\* Vinyl floor on both sides of marriage line will require transition bar

# Cabinetry – Cabinet Options



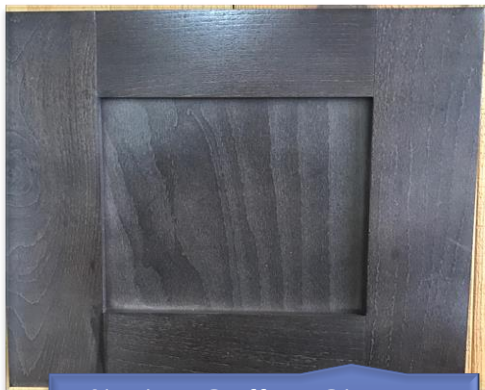
Raised Panel Coffee  
Cherry - MDF



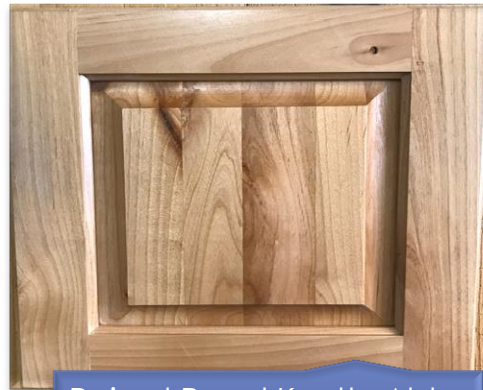
Raised Panel Rochester  
Maple - MDF



Raised Panel Hickory -  
Hardwood



Shaker Coffee Cherry -  
Hardwood



Raised Panel Knotty Alder  
- Hardwood



Shaker Fleetwood White -  
Hardwood

[Return to Table of Contents](#)

# Cabinetry – General Options



Lined  
Overhead  
Cabinets with  
Fixed Shelf



Lined  
Overhead  
Cabinet with  
Adjustable Shelf



Lined Base  
Cabinets with  
Fixed Shelf

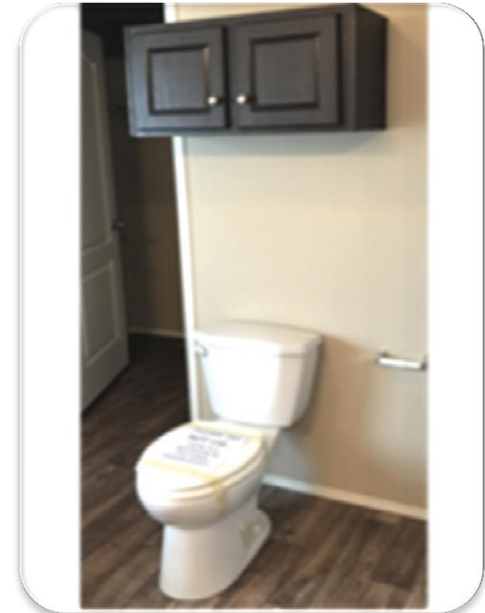
# Cabinetry – Overhead Cabinet Options



Over  
Refrigerator



Utility w/rod  
between



Bathroom  
over  
Commode



# Cabinetry – Base Cabinet Options



Pot & Pan  
Drawer



Pull-Out Trash  
Can



Base Cabinet  
with Utility  
Sink

# Cabinetry – Storage Cabinet Options



3-Door Pantry /  
Linen Cabinet



6-Door Pantry /  
Linen Cabinet



Bookshelf

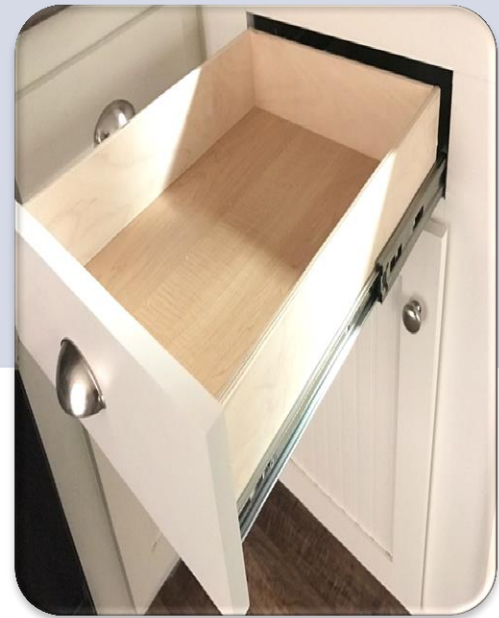
# Cabinetry – Drawers Options



Drawer over door



Bank of Drawers



Full-Access  
Drawer Guides

# Cabinetry – Countertop Edging



Laminate  
Self-Edge



Laminate  
Bullnose Edge



# Cabinetry – Backsplashes (1)



[Return to Table of Contents](#)

# Cabinetry – Backsplashes (2)



[Return to Table of Contents](#)



# Cabinetry – Entertainment Centers



[Return to Table of Contents](#)

# Cabinetry – Locker Bench



Base cubbies, beadboard and coat hooks

[Return to Table of Contents](#)

# Cabinetry – Wet Bar w/Overhead Cabs



[Return to Table of Contents](#)

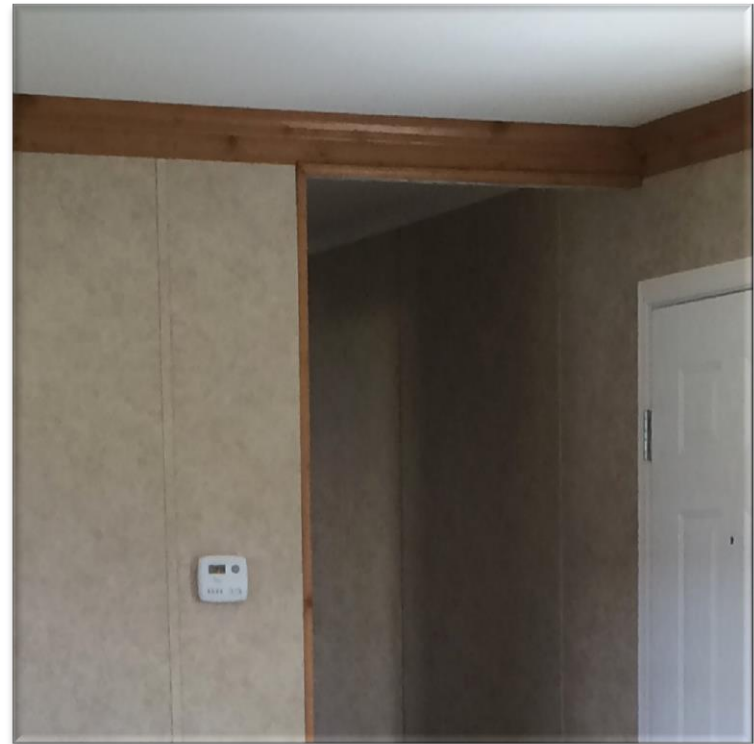


# Cabinetry – Crown Molding (Broadmore)

Crown Molding – Kitchen Cabinets



Crown Molding – Upgraded Ceiling



[Return to Table of Contents](#)

# Kitchen – Dishwashers



Dishwasher  
Prep – Plumb &  
Wire with  
Opening



Standard  
Dishwasher



Pot and Pan  
Scrubber  
Dishwasher  
(Energy Star  
Certified)

# Kitchen – Faucet Options



[Return to Table of Contents](#)

# Kitchen – General Options



Garbage  
Disposal



Icemaker  
w/plumbing



Ship Loose  
Icemaker  
Waterline

# Kitchen – General Options, Cont.



\*\* Includes full tile backsplash in entire kitchen

Glass and  
Stainless Steel  
Range Hood  
with Full Tile  
Backsplash



# Kitchen – Microwave Options



Pantry  
Microwave



Microwave  
Range Hood

# Kitchen – Whirlpool Range Options

Electric



Coil Top

Gas



Glass  
Door &  
Clock

Electric



Smooth  
Top (Self  
Cleaning)

Gas



Self  
Cleaning

[Return to Table of Contents](#)

# Kitchen – Whirlpool Refrigerator Options

18 Cubic Foot



Over and Under  
(Icemaker-  
Ready)

22 Cubic Foot



Side by Side  
with Ice and  
Water in Door

[Return to Table of Contents](#)

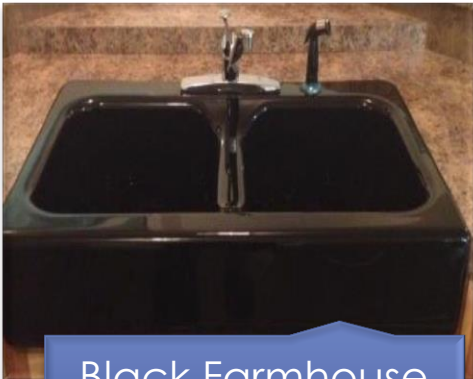
# Kitchen – Sink Options



7" Deep Stainless  
Steel



8" Deep Stainless  
Steel



Black Farmhouse  
Apron Kitchen Sink



White Farmhouse  
Apron Kitchen Sink

[Return to Table of Contents](#)

# Utility – Furnaces (Electric)



*The Mobile Home Revolution Continues!*

## **Revolv® RE Series Electric Furnaces**



DOWNFLOW



UPFLOW



A/C and H/P Ready: For up through 4.0 tons.  
Available in: Downflow and Upflow configurations.  
Built in Full Sized Coil Cabinet: No need to add parts.  
Built in Circuit Breakers: For safety and dependability.  
Nichrome Heating Elements: For long lasting efficient heat.



**Warranty**  
2 Years Parts / 1 Year Labor  
Visit [www.stylecrestinc.com](http://www.stylecrestinc.com)  
for warranty registration



No  
Door



Metal  
Door



Door  
(Wood)



[Return to Table of Contents](#)



# Utility – Furnaces (Gas)



*The Mobile Home Revolution Continues!*

## **Revolv® RG1 80% AFUE Gas Furnaces**

WITH COIL CABINET



WITHOUT COIL CABINET



**Sealed Combustion:** Vents exhaust gases directly outdoors and draws in outside fresh air for combustion.

**Choice of Models:** For up to 4 tons A/C and 3.5 tons H/P\*

**Modern Hot Surface Ignition:** No pilot lights to blow out.

**Low Maintenance:** Sealed bearings on motors, reliable controls and burners.

**Appliance Quality Metal Door:** With baked enamel finish for long life and easy cleaning.

\*Use additional coil cabinet above 3.0 ton AC or HP



### **Warranty**

2 Years Parts / 1 Year Labor

10 Years Heat Exchanger

Visit [www.stylecrestinc.com](http://www.stylecrestinc.com) for warranty registration



No Door



Metal Door



Door (Wood)

[Return to Table of Contents](#)

# Utility – Furnaces (95.1% High Efficiency Gas)

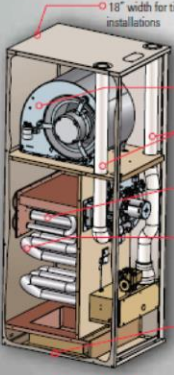
**95.1% and 80% AFUE High-Efficiency CMF Gas & Oil Furnaces**

**The Interterm CMF95 95.1% AFUE furnaces use proven components to ensure high quality and dependability.**

- 95.1% AFUE furnace in a classic 18-inch width for tight replacement jobs.
- Dependable, silicon nitride hot surface igniter is controlled by proven SmartLit® technology for longer igniter life.
- High static blowers.
- Heavy gauge aluminized steel heat exchanger and stainless steel secondary heat exchanger assure a long life.
- Diagnostic lights for easy troubleshooting.
- Optional - Vent termination accessory kit allows installation in a home that had an 80% AFUE furnace using a metal roof jack.

**The Interterm CMF2 80% AFUE furnace is available for oil fuel source.**

- Beckett gas burners are standard.
- Designed for most manufactured housing applications, and space heating, garages, and hunting cabins. Ideal for tight replacement applications.
- Multi-speed blower and multi-fired burner for efficiency and long life.
- Titanium treated aluminized steel process technology provides strength and durability to the heat exchanger for long life.
- Appliance finish protects against rust and other corrosion.
- All units and each component are tested on the manufacturing line to ensure quality and safety.



**Model CMF2**

**Model CMF95**

- 18" width for tight installations
- Multi-speed direct drive blower
- Two-pipe system for flexible installations
- Stainless steel secondary heat exchanger
- Aluminized steel primary heat exchanger
- MA 100 and CS 200 burners for versatility in applications

# Utility – Water Heaters



The new degree of comfort.™

Water Residential Electric Professional Classic Water Heaters

**Professional Classic™ electric water heaters are engineered for longer life – resistored heating elements and premium grade anode rod**

## Efficiency

- 85 - 93 EF
- Isolated tank design reduces conductive heat loss
- Resistored copper upper element and resistored Lifeguard™ stainless steel lower element to prolong anode rod and tank life



## Performance

- FHR: 42 - 99 gallons, based on gallon capacity
- Recovery rate is 21 gallons at a 90 degree Fahrenheit rise\*\*

## System Sentinel

- (Available on selected models)
- Exclusive diagnostic system with glowing LEDs that verify heating element operation. LEDs pin point the exact location of functioning or non-functioning heating elements

## Longer Life

- Rheem exclusive R-Tech (resistored) anode rod provides long-lasting tank protection

## Features

- Electric junction box located above heating elements for easy installation
- Over-temperature protector cuts off power in excess temperature situations
- Automatic thermostat keeps water at desired temperature

## Plus...

- EverKleen™ self cleaning device fights harmful sediment build-up with a high-velocity spiraling water stream – helps operating efficiency by saving energy, money and improving tank life



- Enhanced-flow brass drain valve
- Temperature and pressure relief valve included
- Low lead compliant

## Warranty

- 6-Year limited tank and parts warranty\*
- With ProtectionPlus™ the 6-year limited tank warranty becomes 10-year

\*See Residential Warranty Certificate for complete information  
Units meet or exceed ANSI requirements and have been tested according to DOE procedures. Units meet or exceed the energy efficiency requirements of NAECA, ASHRAE standard 90, ICC Code and all state energy efficiency performance criteria.



**Professional Classic**  
20 to 120-Gallon Capacities  
240 Volt AC/Single Phase  
Double and Single Element Models  
Electric



See dimensions chart on back.

Electric

30 Gallon

\*\* Standard in most houses

40 Gallon

50 Gallon

\*\* Energy Star & UBC Certified

Gas

40 Gallon

\*\* Energy Star Certified

50 Gallon

\*\* Energy Star & UBC Certified

INTEGRATED HOME COMFORT

PRINTED IN U.S.A. 5613 WP FORM NO. PAGE RH

[Return to Table of Contents](#)

# Utility – Whirlpool Washer and Electric Dryer



\*\*Electric dryer is standard, however, a gas dryer is available for an additional cost

[Return to Table of Contents](#)

# Utility – General Options



Water Heater Access  
w/Chalkboard and  
Shelves



Water Heater Drain  
Line Installed



Toe-Kick Floor  
Register



# Interior – Blind Options



1" Mini Blinds



2" Wood Faux Blinds

# Interior – Fireplace Option

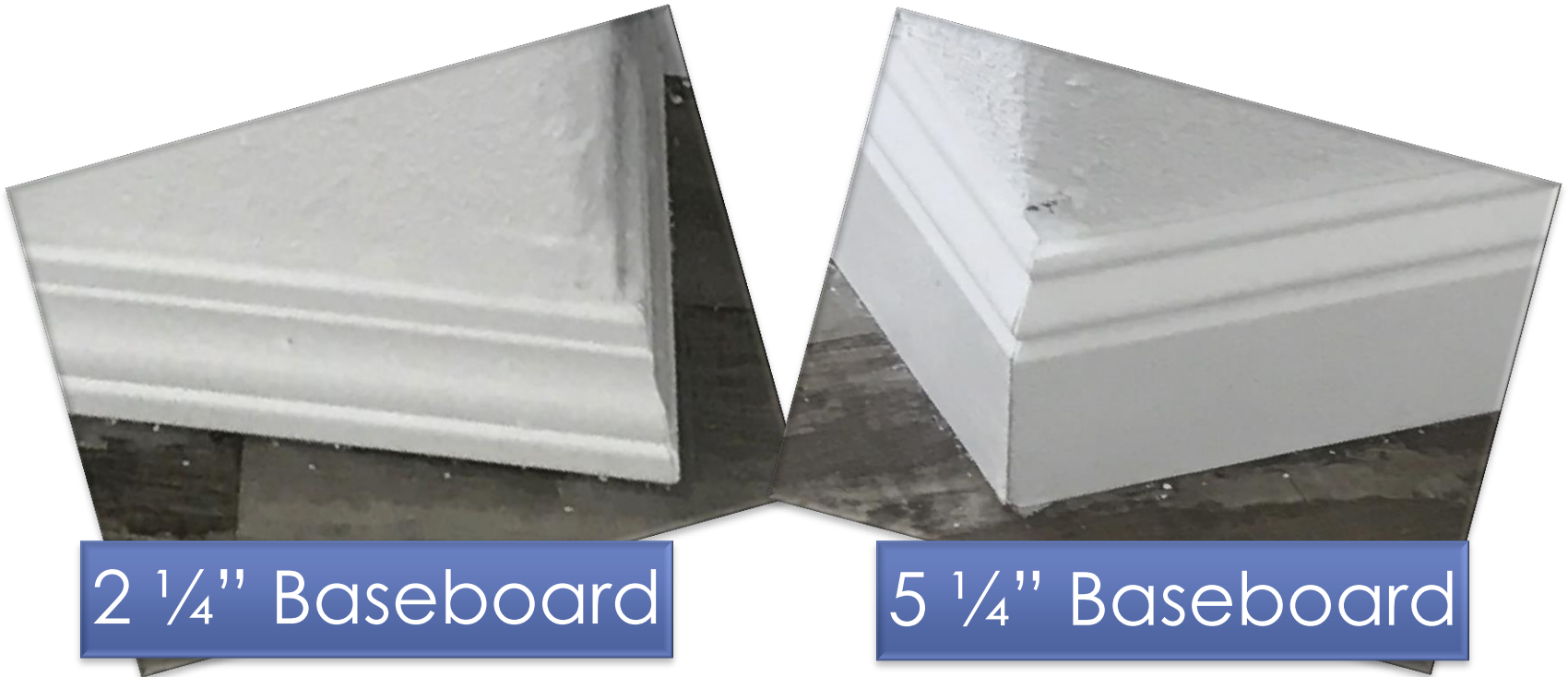


**\*\* Available in Wood Burning or in Gas**

[Return to Table of Contents](#)

# Interior – Baseboard Molding Options

\*\* Does not include door casing or window trim



[Return to Table of Contents](#)

# Interior – Wood Valances



[Return to Table of Contents](#)

# Interior – Wood Upgrades



White Wood Shelves with Pole



Upgraded Window Sills



# Exterior – Upgrade Exterior #1



- 10' DORMER WITH 2 COLUMNS AND LAP SIDING UNDER DORMER
  - 5 ROWS LAP SIDING ON FDS ONLY
  - PLANT MADE SHUTTERS ON FDS ONLY

[Return to Table of Contents](#)

# Exterior –

## Upgrade Exterior #2



- 18' DORMER ILO STD 10' DORMER OVER ENTRANCE DOOR AND L/R WINDOW WITH WAGON WHEEL ACCENT AT DORMER PEAK
  - NO ACCENT IN DORMER AREA
- FAUX ROCK COLUMNS WITH DOUBLE POST COLUMNS ABOVE
- TRIM AND ACCENT PAINT APPROX. 2' FROM TOP OF HOME DOWN
  - PLANT MADE SHUTTER ON FDS ONLY

[Return to Table of Contents](#)

# Exterior –

## Upgrade Exterior #3



- 18' INTEGRATED DORMER OVER ENTRANCE DOOR AND L/R WINDOW WITH WAGON WHEEL ACCENT AT DORMER PEAK - NO COLUMNS
  - 5 ROWS LAP SIDING ON FDS ONLY
  - PLANT MADE SHUTTERS ON FDS ONLY

[Return to Table of Contents](#)



# Exterior – Upgrade Exterior #4



- 18' DORMER W/EYEBROW OVER ENTRY DOOR AND L/R WINDOW
  - 10" GALVANIZED METAL AWNING OVER L/R WINDOW
- PLANT MADE SHUTTERS ON FDS WINDOWS ONLY, EXCLUDING SHED ROOF WINDOW
  - WAINSCOT ACCENT W/4" TRIM ON FDS ONLY
- ACCENT PAINT BELOW FDS WINDOWS AND IN EYEBROW DORMER AREA

[Return to Table of Contents](#)

# Exterior – Craftsman Package



- 18' DORMER ILO STD DORMER  
(to be centered over living room window and entrance door - where applicable)
  - ADDITIONAL 8' DORMER  
(if applicable, per plan)
  - 5/4 TRIM ON FDS ONLY
- BOARD AND BATT ACCENTS IN DORMER(S) W/UPGRADE COLUMNS
  - CORBELS IN THE PEAK OF DORMER(S)

[Return to Table of Contents](#)





# Exterior

## Sunset Exterior

(Available only in select models only)

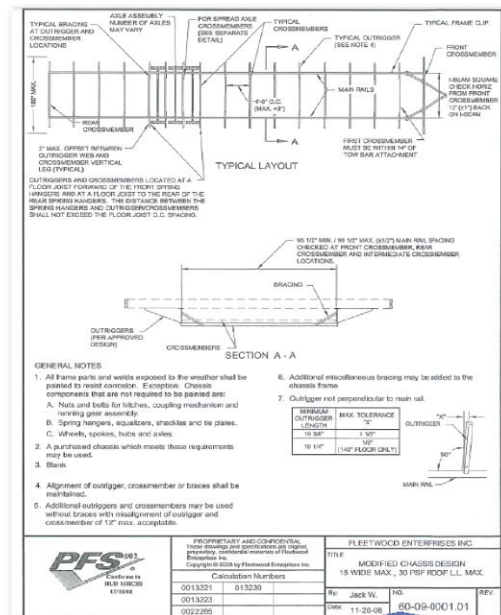
- 8' COVERED PORCH WITH RAILING
- UPGRADED COLUMNS
- LAP SIDING – HITCH END WALL
- ARCH-TOP GLASS FRONT DOOR ON HITCH END IN LIEU OF FRONT DOOR SIDE ENTRANCE
- 46" X 80" WINDOWS IN LIEU OF 62" X 58" IN LIVING AND DINING ROOM HITCH END WALL
- THREE CUSTOM SUNSET DORMERS WITH BOARD AND BATT ACCENTED SIDING

[Return to Table of Contents](#)

# Exterior – Chassis Option



Foundation Ready  
(Recessed) Frame



Modified Chassis  
(Outriggers Every 4')

# Exterior – Roof Pitches

Standard on Most Homes



3:12

Hinged Roof Construction



6:12

\*\* Alternate Construction (AC) Letter/Inspection required if penetrations in hinged section

# Exterior – Dormer Options

8' Dormer



Standard Upgrade  
Dormer for any series

10' Dormer



Standard Waverly Crest  
Dormer and only  
available on Waverly  
Series homes

# Exterior – Dormer Options, Cont.

18' Dormer



Standard Upgrade  
Dormer for any series

18' Dormer w/Integrated Eyebrow



Standard Barrington  
Dormer



# Exterior – Dormer Options, Cont.

eyebrow Dormer



Standard Upgrade  
Dormer for any series

Tower Dormer



Tower Windows are  
included in the price

# Exterior – Dormer Options, Cont.

Box Bay Window



Standard Upgrade  
for any series

Box Bay Dormer

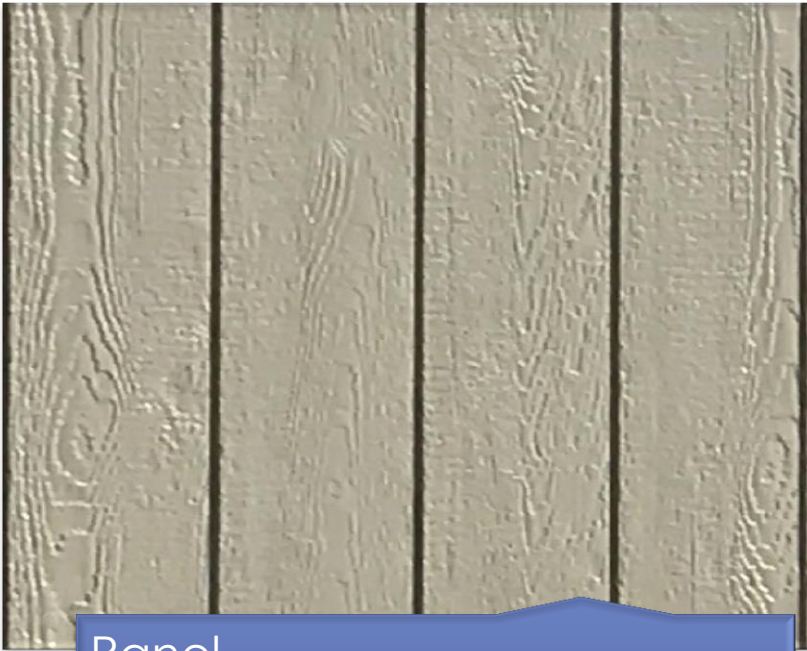


Standard Upgrade  
for any series

\*\* Rock not included

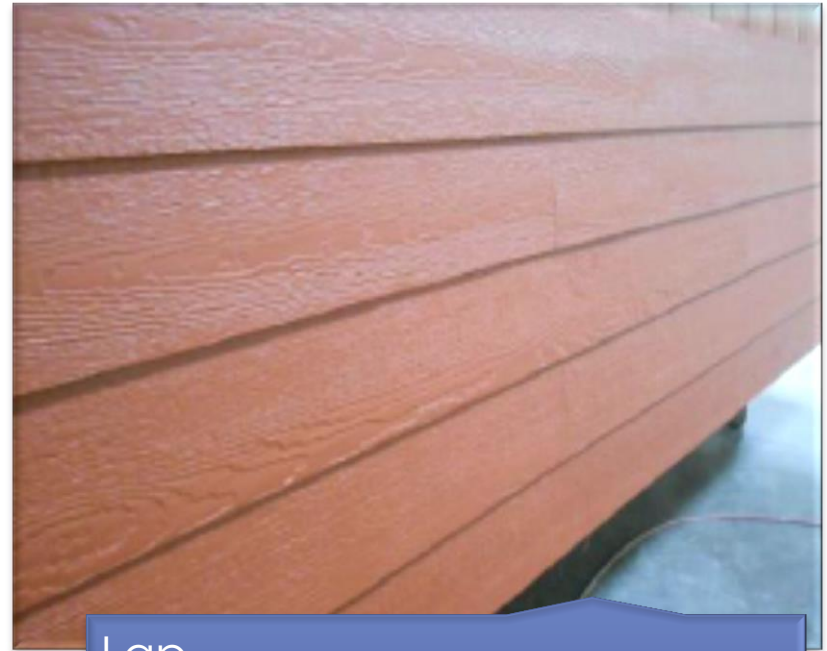
[Return to Table of Contents](#)

# Exterior – Siding Options



Panel

- LP SmartSide (Dimensional Wood)



Lap

- Cemplank (Fiber Cement)

# Exterior – Siding Options, Cont.

Vinyl Lap



Variform

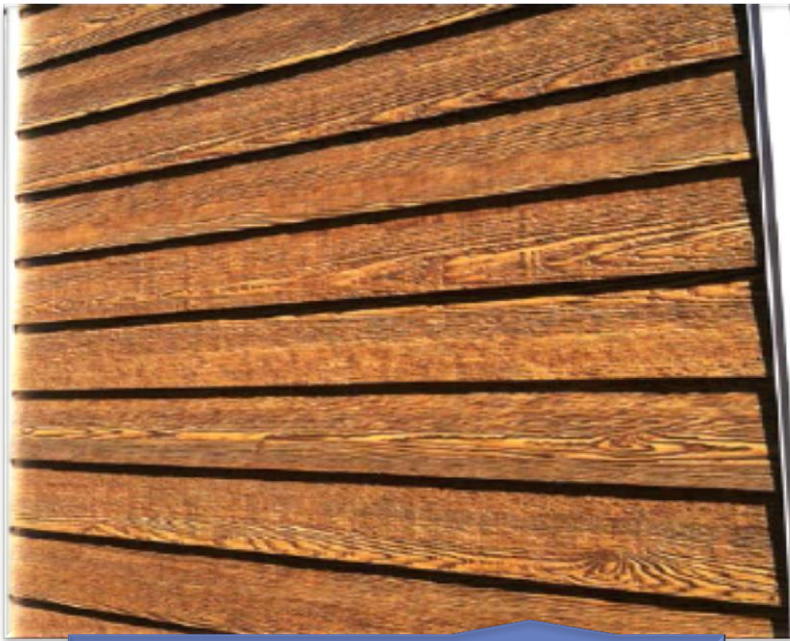
Board and Batt



LP SmartSide



# Exterior – Siding Options, Cont.



Summer Wheat

- Woodtone Rustic Series



Split Log

- No Warranty Available



# Exterior – Shutter Options



Vinyl Shutters



Craftsman Shutters

# Exterior – Recessed Entry



Recessed Entry View  
#1



Recessed Entry View  
#2

# Exterior – General Option



Air Infiltration  
Barrier (House Wrap)

# Exterior – Roofing Options



Architectural  
Shingles



Metal Roof



# Exterior – Skylight Option





# Exterior – General Options

Doorbell (Wireless –  
Shipped Loose)



Hose Bib (Frost Free)



[Return to Table of Contents](#)

# Doors & Windows – Exterior Doors



[Return to Table of Contents](#)

# Doors & Windows – Exterior Doors, Cont.



34" Fiberglass Outswing  
Rear Entrance Door



32" or 36" Inswing 9-Lite  
Rear Entrance Door

# Doors & Windows – Sliding & Patio Exterior Doors



6' 8" x 6' 8" Sliding Glass Door  
with Screen (Blinds Included)  
\*\* shown with option cedar trim

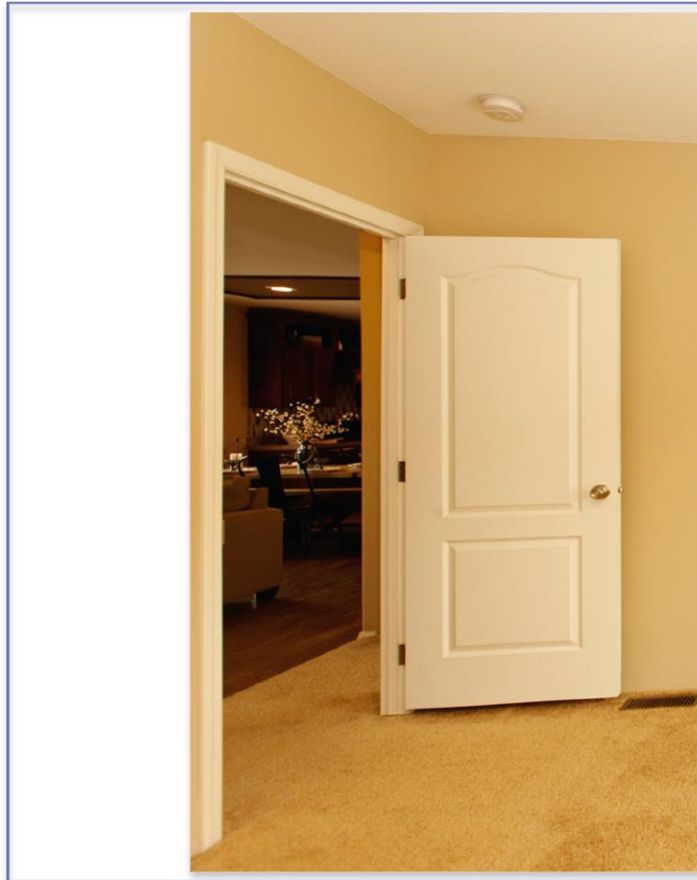


32" Single Patio Door with  
Integrated Mini-Blinds



72" Patio Door with Screen  
(Only One Side Active)

# Doors & Windows – Interior Door Options

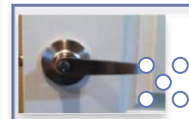


○ 2-Panel White Passage Doors with Mortised Hinges and White Casing

○○ 6-Panel Knotty Pine Solid Wood Doors and Casing



○○



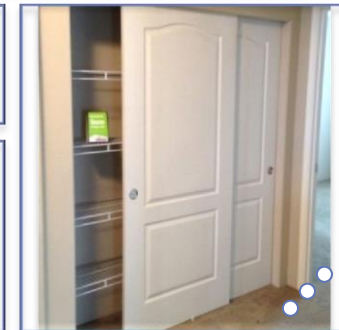
○○○○



○○○○

○

○ 2-Panel Hollow-core Wardrobe Doors



○○○○

○○ Glass Pantry Door

○○○ Lever Door Handles

[Return to Table of Contents](#)



# Doors & Windows – Window Options



36x8



30x15



14x42

\*\* Vinyl-clad Thermopane Windows with Low “E” Coating

[Return to Table of Contents](#)

# Doors & Windows – Window Options, Cont.



62x59



40x53



46x80

\*\* Vinyl-clad Thermopane Windows with Low "E" Coating

[Return to Table of Contents](#)

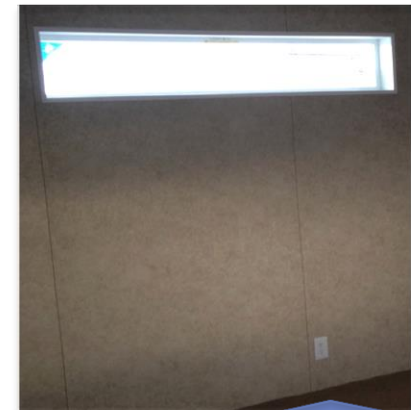
# Doors & Windows – Window Options, Cont.



46x59



30x59



72x12

\*\* Vinyl-clad Thermopane Windows with Low "E" Coating

[Return to Table of Contents](#)



## Bathrooms -

### **Glamour Bath**

- DECKMOUNT DROP IN OVAL TUB
- 1 PC. 48" WALK-IN SHOWER
- DOUBLE SINKS IN LAVY
- LINEN CABINET OR SHELVES (per plan)
- 40" X 53" WINDOW ABOVE TUB
- COSMETIC LIGHT BARS AND MIRRORS OVER SINKS

[Return to Table of Contents](#)

# Bathrooms – Sinks & Faucets

Acrylic Sink



China Sink



Plastic Dual Handle Faucet



Single-Lever Chrome Faucet





# Bathrooms – Tub/Shower Combos



3-Piece  
Acrylic



1-Piece  
Fiberglass



1-Piece  
Fiberglass with  
Oval Tub

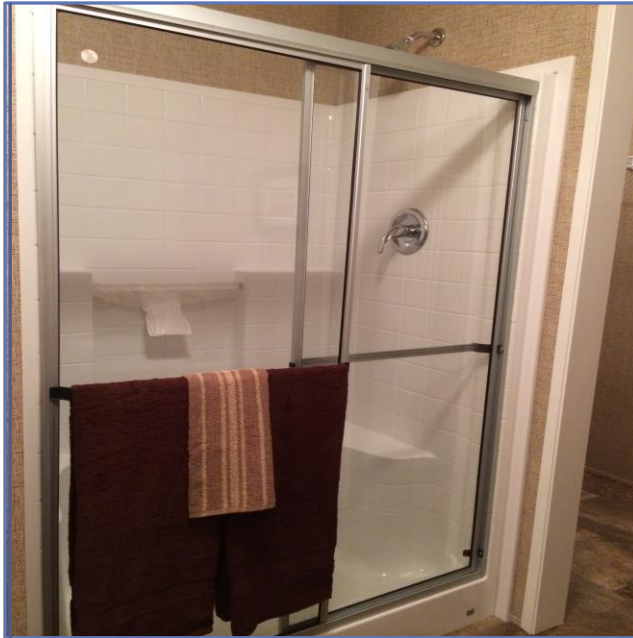


# Bathrooms – Drop-In Tubs



[Return to Table of Contents](#)

# Bathrooms – Walk-In Showers

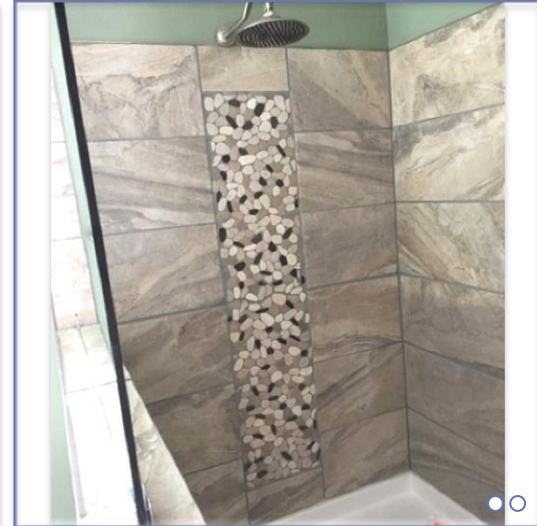
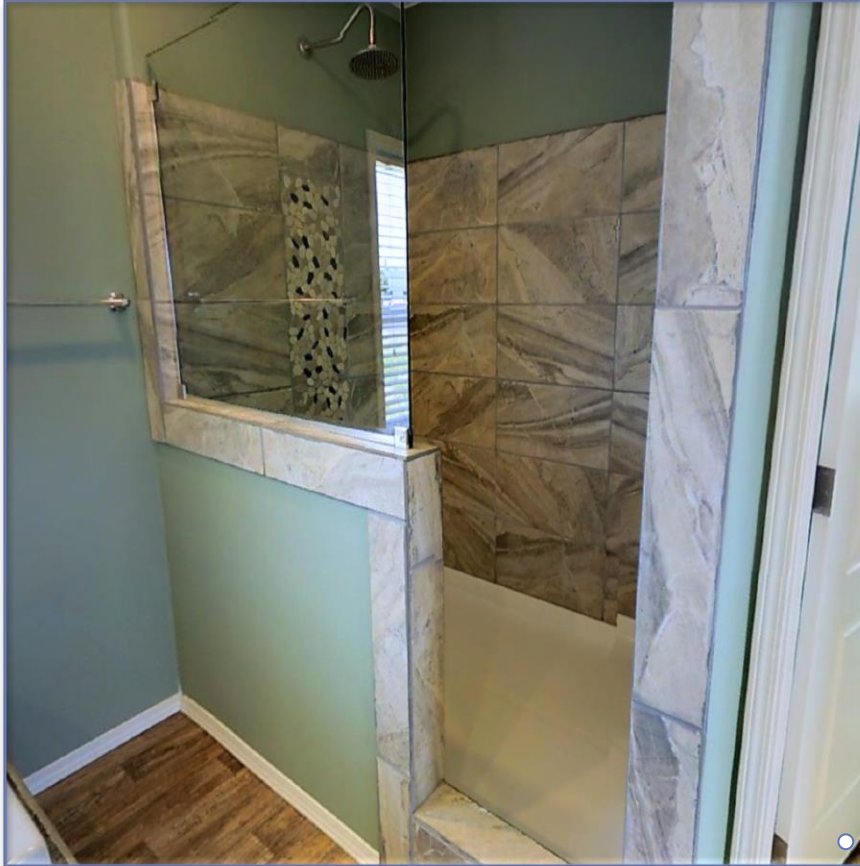


48" 1-Piece  
Fiberglass



60" 1-Piece  
Fiberglass

# Bathrooms – 72" Baymont Tile Shower



- 48" x 72" Shower Pan
- ○ Real Tile Panels
- ○ Large Walkway into Shower
- ○ Custom Tile Insert
- ○ Rainfall Shower Head

[Return to Table of Contents](#)



# Bathrooms – Toilet Options



Standard



Elongated



Raised  
(And Elongated)





# Bathrooms – General Options

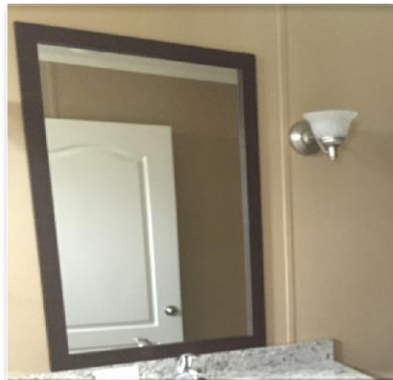
Mirrored Medicine Cabinet



Standard Cosmetic Light Bar



Sconce Light (**BM 14663B Signature Pkg Only**)



Overhead Cabinet over Commode



[Return to Table of Contents](#)

# Miscellaneous –



# Miscellaneous –

- **Modular Home Pricing** - \$10.00 a sq. ft. plus applicable state 3<sup>rd</sup> party inspection fees of \$4,000

- **MOD (IRC) CODE PACKAGE:**

- \*\* STATE MODULAR FEES
- \*\* 19/32 TONGUE AND GROOVE FLOOR DECKING
- \*\* 2" X 10" FLOOR JOISTS OF #2 SPF
- \*\* PLUMBING, ELECTRICAL, AND HEAT DUCTS INSTALLED BELOW FLOOR JOISTS
- \*\* NO FLOOR INSULATION
- \*\* DISPOSABLE CHASSIS, RETAILER AND OWNER RESPONSIBILITY
- \*\* MOD 50 GALLON WATER HEATER
- \*\* 45#, 3/12 ROOF
- \*\* R-40 CEILING INSULATION STD
- \*\* R-21 WALL INSULATION STD
- \*\* AIR INFILTRATION BARRIER (HOUSE WRAP)
- \*\* WATER SHUT-OFF VALVES THROUGHOUT
- \*\* WILL COST MORE MONEY IF 2012 IECC OR HIGHER REQUIRED (COLORADO ONLY)
- \*\* 16" EAVES ON 20', 24', 28' AND 40' WIDE HOMES TO MEET REQUIREMENTS
- \*\* 10" EAVES ON 29'6" WIDE HOMES TO MEET REQUIREMENTS
- \*\* 6" EAVES ON 30' WIDE HOMES TO MEET REQUIREMENTS

# Miscellaneous – Standard Series Elevations



Broadmore



Dakota



# Miscellaneous – Standard Series Elevations, Cont.



Rivercrest



Waverly Crest



# Miscellaneous – Standard Series Elevations , Cont.



Timberwood



Barrington

# Miscellaneous – Standard Series Elevations, Cont.



## Riverknoll

[Return to Table of Contents](#)